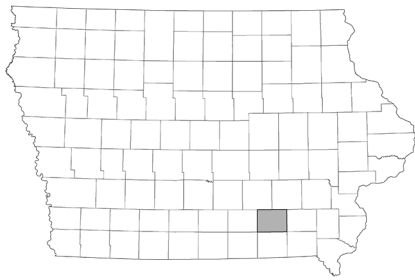


Data for Decision Makers



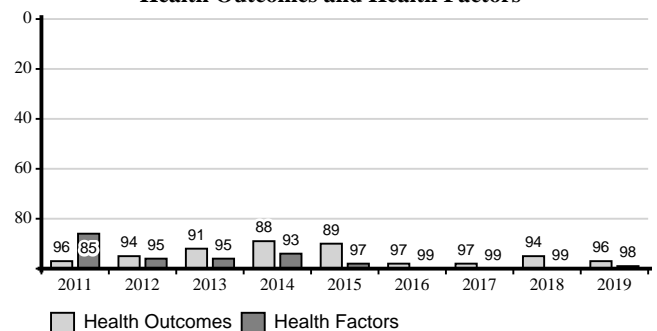
Wapello County Health Profile

report created: 06/25/2019

Health Rankings

A wide range of health data and information can help residents, health providers, and policy makers understand the health situations and health needs of county residents. This health Data for Decision Makers provides basic and summary health data and information at the county level. It can be a starting point for discussions on health issues, a guide for health needs, and help shape future programming and policies. It is updated annually to provide the most current set of indicators and can be used to compare across counties, regions, and the state.

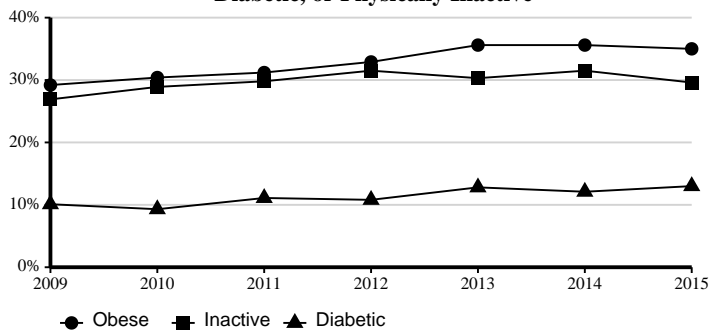
County Health Rankings by Report Year
Health Outcomes and Health Factors¹



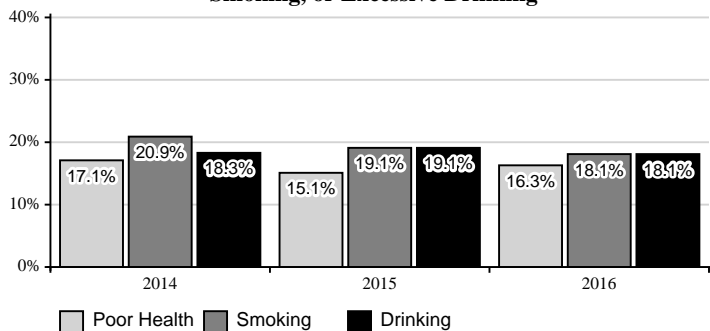
Counties are ranked against each other. Higher rankings (small numbers) are better than lower rankings (higher numbers).

Health Data ^{1,2,3}	County	State
Health Outcomes Rank (2019)	96/99	NA
Health Factors Rank (2019)	98/99	NA
Obesity (2015)	35.0%	32.0%
Diabetic (2015)	13.0%	10.0%
Inactivity (2015)	29.6%	23.0%
Poor Health (2016)	16.3%	13.1%
Smoking (2016)	18.1%	16.7%
Excessive Drinking (2016)	18.1%	22.1%

Estimated County Percent Obese, Diabetic, or Physically Inactive²



Estimated County Percent Poor/Fair Health, Smoking, or Excessive Drinking³



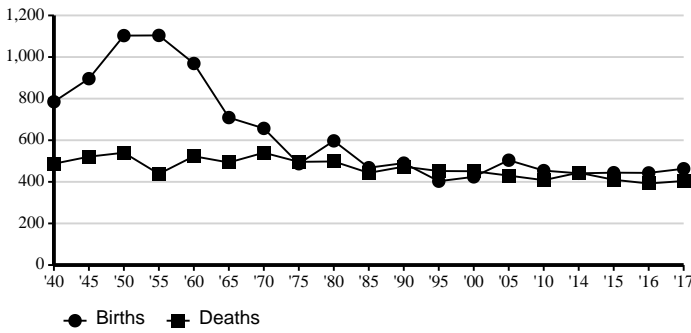
Contacts:

Regional Director
Sue Henderson
214 E. Main St.
Ottumwa, IA 52501
hendy@iastate.edu
641-682-5491

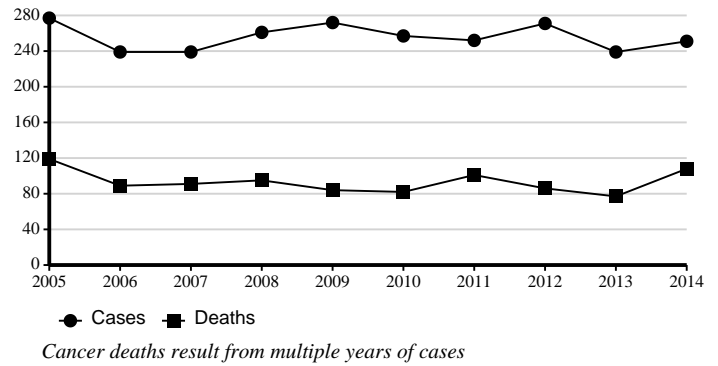
County Office
Jess Heisdorffer
214 E Main St
Ottumwa, IA 52501
jessh@iastate.edu
641-682-5491

<http://indicators.extension.iastate.edu>

Number of County Births and Deaths⁴



Number of County Cancer Cases and Cancer Deaths⁵

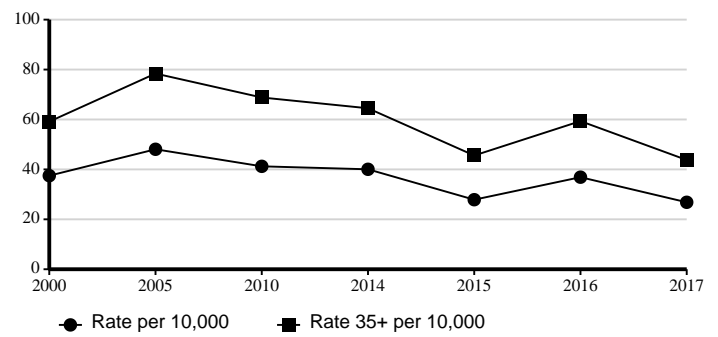


Estimated Hospitalizations, Deaths, and Hospitalization Charges from Falls, 2010-2014⁷

	County	State
Hospitalizations	956	54,447
All Ages, Rate/1,000	5.5	3.6
50-64, Rate/1,000	3.8	2.7
65+, Rate/1,000	25.1	17.2
Deaths from Falls	6	2,323
All Ages, Rate/100,000	3.4	15.1
50-64, Rate/100,000	2.7	6.5
65+, Rate/100,000	17.0	85.9
Hospitalization Charges	\$26,909,579	\$1,625,126,573
Average Charges	\$28,148	\$29,848

The 2010-2014 year range represents a 5-year sum of data

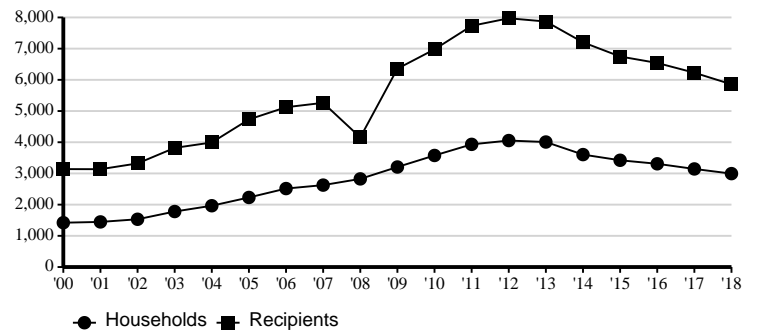
Rate of County Heart Attack Hospitalizations⁶



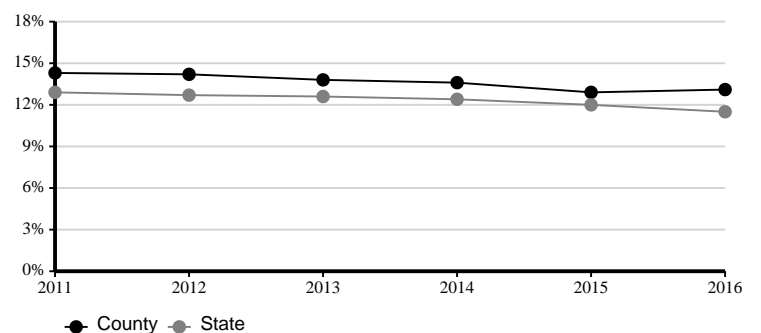
Primary Care Physicians, Dentists, and Mental Health Providers⁷

	County Providers	County Pop per Provider	State Providers	State Pop per Provider
Primary Physicians				
2016	23	1,521	2,254	1,391
2015	26	1,353	2,292	1,363
2014	28	1,258	2,303	1,349
2013	27	1,311	2,287	1,351
Dentists				
2017	21	1,669	2,071	1,519
2016	20	1,749	2,008	1,561
2015	20	1,759	1,956	1,597
2014	20	1,761	1,907	1,629
Mental Health				
2018	43	815	4,508	698
2017	34	1,029	4,146	756
2016	34	1,035	3,812	819

Average Monthly Number of County Households and Recipients Receiving Food Stamps⁸



Percent of Population Food Insecure¹⁰



Disability Characteristics, 2013-2017¹¹

	County		State	
	Estimate	MOE*	Estimate	MOE*
Total Population	34,971	+/-150	3,074,216	+/-290
With a Disability	14.2%	+/-1.1%	11.6%	+/-0.1%
Hearing	5.3%	+/-0.8%	3.7%	+/-0.1%
Vision	1.9%	+/-0.4%	1.8%	+/-0.1%
Cognitive	5.4%	+/-0.8%	4.4%	+/-0.1%
Ambulatory	7.3%	+/-0.8%	5.8%	+/-0.1%
Self care	2.5%	+/-0.5%	2.1%	+/-0.1%
Independent Living	6.6%	+/-1.2%	4.6%	+/-0.1%
Ages 18-64	21,245	+/-192	1,870,317	+/-1,484
With a Disability	12.7%	NA	9.4%	NA
Hearing	4.0%	+/-1.0%	2.1%	+/-0.1%
Vision	1.4%	+/-0.5%	1.4%	+/-0.1%
Cognitive	5.3%	+/-1.0%	4.0%	+/-0.1%
Ambulatory	5.8%	+/-1.0%	4.1%	+/-0.1%
Self care	2.0%	+/-0.5%	1.4%	+/-0.1%
Independent Living	5.2%	+/-1.2%	3.0%	+/-0.1%
Ages 65-74	3,153	+/-40	265,511	+/-569
With a Disability	23.5%	+/-3.5%	22.0%	+/-0.5%
Hearing	10.1%	+/-2.8%	9.4%	+/-0.3%
Vision	3.9%	+/-1.9%	2.8%	+/-0.1%
Cognitive	6.1%	+/-2.4%	3.8%	+/-0.2%
Ambulatory	13.9%	+/-2.9%	12.2%	+/-0.4%
Self care	3.1%	+/-1.8%	3.2%	+/-0.2%
Independent Living	8.0%	+/-2.5%	5.4%	+/-0.2%
Ages 75 and above	2,624	+/-112	211,861	+/-502
With a Disability	49.1%	+/-5.1%	44.2%	+/-0.6%
Hearing	24.0%	+/-3.9%	21.5%	+/-0.5%
Vision	8.0%	+/-3.1%	7.5%	+/-0.3%
Cognitive	11.2%	+/-3.5%	9.5%	+/-0.4%
Ambulatory	26.7%	+/-4.5%	26.7%	+/-0.6%
Self care	9.9%	+/-4.1%	9.4%	+/-0.3%
Independent Living	17.0%	+/-5.1%	18.0%	+/-0.4%

Educational Attainment, 2013-2017¹¹

	County		State	
	Estimate	MOE*	Estimate	MOE*
Population 25 and older	24,091	+/-115	2,067,914	+/-866
High School Graduate or Higher	87.4%	+/-1.2%	91.8%	+/-0.1%
Bachelor's Degree or Higher	18.4%	+/-1.5%	27.7%	+/-0.2%

Number of Substance Abuse Treatment Admissions by Type, 2016-2017¹²

	County		State	
	2016	2017	2016	2017
Total Admissions	501	535	24,501	25,297
Alcohol	137	123	8,919	9,104
Methamphetamine	216	236	5,716	6,564
Marijuana	132	147	6,355	6,306
Opioids	22	22	2,328	2,327
Cocaine	**	**	1,183	996

***Data for counties with small number of cases are suppressed for confidentiality purposes*

Number of Hospital and Nursing Facilities and Beds, 2016¹²

	County	State
Hospitals	1	121
Hospital Beds	116	11,620
Nursing Facilities	3	413
Nursing Facility Beds	276	29,660

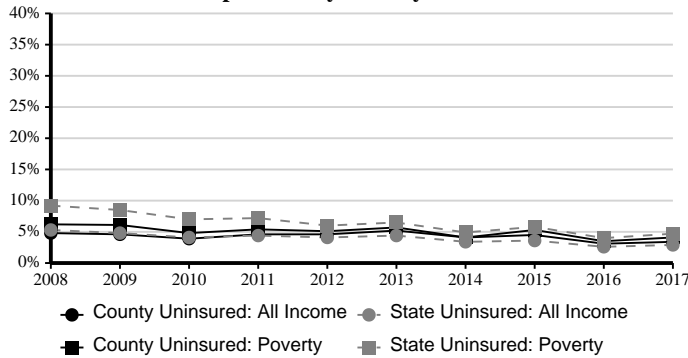
Percentage of Population by Age¹¹

Age Groups	County		State	
	2000	2010	2000	2010
17 or younger	23.3%	22.8%	25.1%	23.9%
0 - 4	5.9%	6.6%	6.4%	6.6%
5 - 9	6.5%	6.3%	6.9%	6.6%
10 - 14	6.8%	6.0%	7.2%	6.6%
15 - 17	4.1%	3.9%	4.6%	4.1%
18 - 24	9.7%	9.6%	10.2%	10.0%
25 - 44	26.0%	23.8%	27.6%	24.5%
45 - 64	23.3%	27.3%	22.2%	26.7%
65 or older	17.8%	16.4%	14.9%	14.9%
65 - 84	15.2%	13.7%	12.7%	12.4%
85 or older	2.6%	2.7%	2.2%	2.5%
Median Age (years) ^a	39.2	39.8	36.6	38.1
Age Dependency ^b	69.8	64.5	66.7	63.4
Old-Age	30.2	27.0	24.8	24.3
Child	39.6	37.5	41.8	39.1

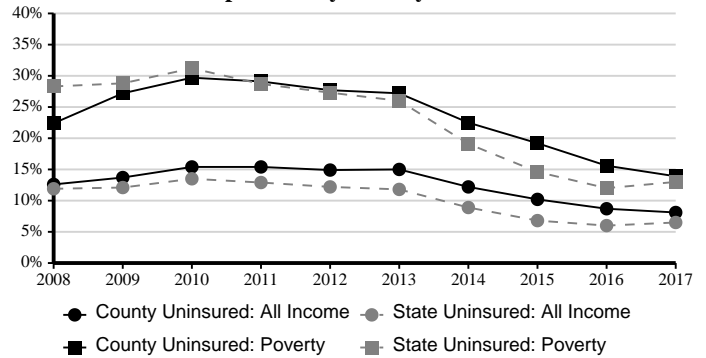
^bAge Dependency Ratio

**MOE = the margin of error for American Community Survey estimates¹¹ which is a numerical value that when added to or subtracted from the point estimate value gives the range of a 90% confidence interval around the estimate.*

Ages 0-18 Percent Health Uninsured Population by Poverty Level¹³



Ages 18-64 Percent Health Uninsured Population by Poverty Level¹³

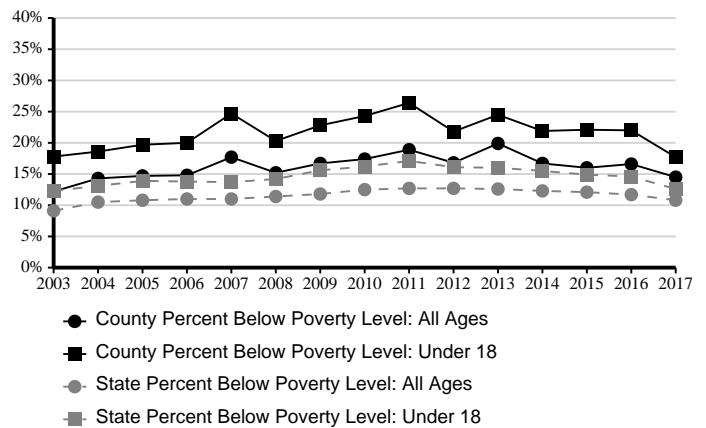


Median^a Household and Per Capita Income, 2013-2017¹¹

	County		State	
	Estimate	MOE*	Estimate	MOE*
Total Households	14,531	+/- 320	1,251,587	+/- 3,914
Median Household Income	\$43,329	+/- \$1,725	\$56,570	+/- \$303
Median Family Income	\$55,232	+/- \$3,372	\$72,270	+/- \$399
Per Capita Income	\$23,413	+/- \$1,153	\$30,063	+/- \$188

*MOE = the margin of error for American Community Survey estimates¹¹ which is a numerical value that when added to or subtracted from the point estimate value gives the range of a 90% confidence interval around the estimate.

Percent Below Poverty Level by Age¹⁴



The Iowa State University (ISU) Translational Research Network (U-TuRN) was established to facilitate the adoption, implementation and sustainability of evidence-based programming in community settings. We are working to build a state-wide support network that will help to promote more effective, team-based approaches to community health issues and needs. More information at <https://research.hs.iastate.edu/uturn/>. Contact: uturn@iastate.edu



Information in this document was derived from:

¹County Health Rankings and Roadmaps: Building a Culture of Health, County by County. An annual report, ranking, and data set of health indicators for counties produced in a collaboration between the Robert Wood Johnson Foundation and the University of Wisconsin Population Health Institute. Health outcomes in the County Health Rankings represent measures of how long people live and how healthy people feel. Health factors in the County Health Rankings include health behaviors, clinical care, social and economic factors, and the physical environment

²Retrieved from County Health Rankings and Roadmaps.¹Original source cited: CDC Diabetes Interactive Atlas.

³Retrieved from County Health Rankings and Roadmaps.¹ Original source cited: CDC Behavioral Risk Factor Surveillance System.

⁴Vital Statistics of Iowa, Iowa Department of Public Health.

⁵Iowa Cancer Registry

⁶Retrieved from Iowa Public Health Tracking Portal

⁷Falls in Iowa: County Deaths and Hospitalizations, Iowa Department of Public Health

⁸Retrieved from State Data Center of Iowa. Original source cited: Iowa Department of Human Services.

⁹Retrieved from County Health Rankings and Roadmaps.¹Original source cited: Area Health Resources Files and Center for Medicare and Medicaid Services

¹⁰Retrieved from County Health Rankings and Roadmaps.¹Original source cited: Map the Meal Gap

¹¹U.S. Census Bureau, American Community Survey, 5-year estimates.

¹²Iowa Health Fact Book, The University of Iowa College of Public Health and The Iowa Department of Public Health.

¹³U.S. Census Bureau, Small Area Health Insurance Estimates.

¹⁴U.S. Census Bureau, Small Area Income and Poverty Estimates.

^aMedian is the middle value of a distribution.

^bThe age dependency ratio compares, by age, those typically not in the labor force with those who typically are in the labor force. Old Age dependency is persons 65+ per 100 persons age 18-64. Child dependency is persons under age 18 per 100 persons age 18-64. The total age dependency ratio is persons under age 18 plus persons 65 or older per 100 persons age 18-64.

This series was prepared by:

Sandra Burke, Assistant Scientist III & Extension Specialist
 Bailey Hanson, Systems Analyst II & Extension Specialist
 Christopher J. Seeger, Professor & Extension Specialist

Iowa State University Extension and Outreach does not discriminate on the basis of age, disability, ethnicity, gender identity, genetic information, marital status, national origin, pregnancy, race, religion, sex, sexual orientation, socioeconomic status, or status as a U.S. veteran. Direct inquiries to the Diversity Officer, 515-294-1482, extdiversity@iastate.edu.